

aspera

IMAGINE



SCHOOL CHARTER

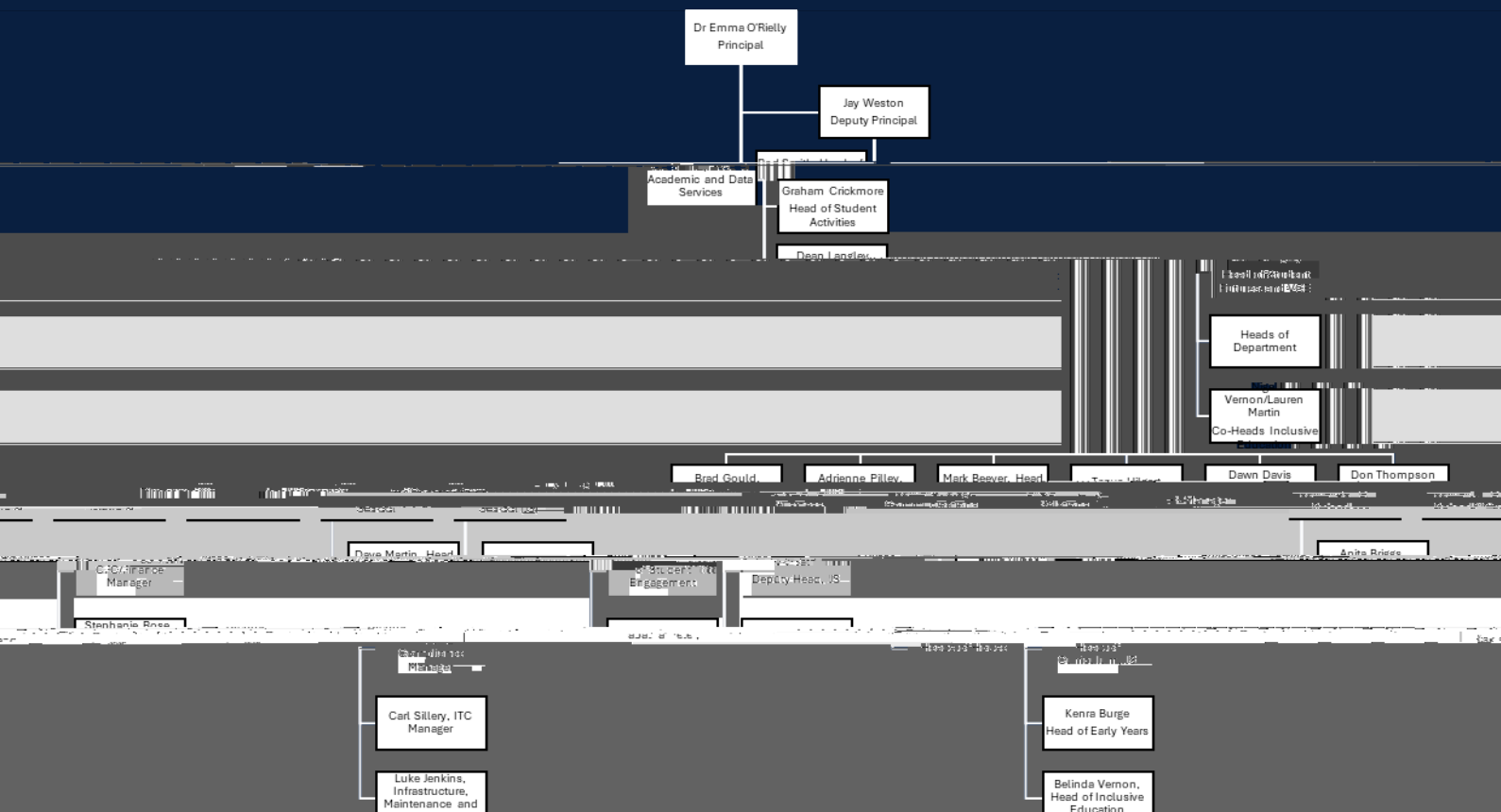
Imagine a school where emotional intelligence is deeply valued.

Where howa sS170 Td(w)505 (en(v)1.7 (alu)-2. Tc 06d/P AMCID 16d/P AMCIDg16 Tc 0.016 Tw 0.1A



ORGANISATION

This chart illustrates the structure and roles of the Girton Grammar School Senior Leadership.



ACADEMIC OUTCOMES

The table to the right shows the VCE outcomes for schools in our region. They are ranked according to the percentage of 2023 Academic Year VCE scores of 40 or higher. The number of students refers to students undertaking at least one Unit 3/4 VCE subject during 2023.

While the VCE outcomes typically see Girton ranked within the top 15% of the state we feel there is potential for improvement in the school's academic performance.

HOW TO APPLY

Enquiries are welcome, and can be made to Ms Tanya Hilgert, HR Manager, 03 5441 3114.

Interviews will be undertaken as applications are received.

Commencement: Term 1, 2025 or earlier by negotiation.

Expressions of interest should be forwarded by email to: employment@girton.vic.edu.au as soon as possible and will need to include the following:

Covering letter

Your letter is your first opportunity to 'speak' to us and should outline what you

Girton Grammar School's Statement of Effective Pastoral Care outlines the role teachers are expected to play in the care and nurturing of each student.

Duties outside school hours

Participate in the School's Co-Curriculum program up to two hours per week (pro-rata).

Attend School staff meetings, departmental meetings and other meetings, as scheduled

Be available for, and participate in, Parent/Teacher interviews.

Participate in Speech Night, information nights, open days and other designated significant School activities

Attend School Outdoor education Camps or other Curriculum Camps, if required

Undertake professional development sessions

Teachers are required to:

- Attend promptly and actively supervise students whilst on yard duty and during other

Teachers are required to:

- Participate in Professional Development so as to increase professional knowledge, strengthen teaching effectiveness and improve outcomes for students.
- Support school-wide professional learning through the sharing of professional knowledge and practices with colleagues
- Participate in a cyclical appraisal process to improve knowledge and practice.

